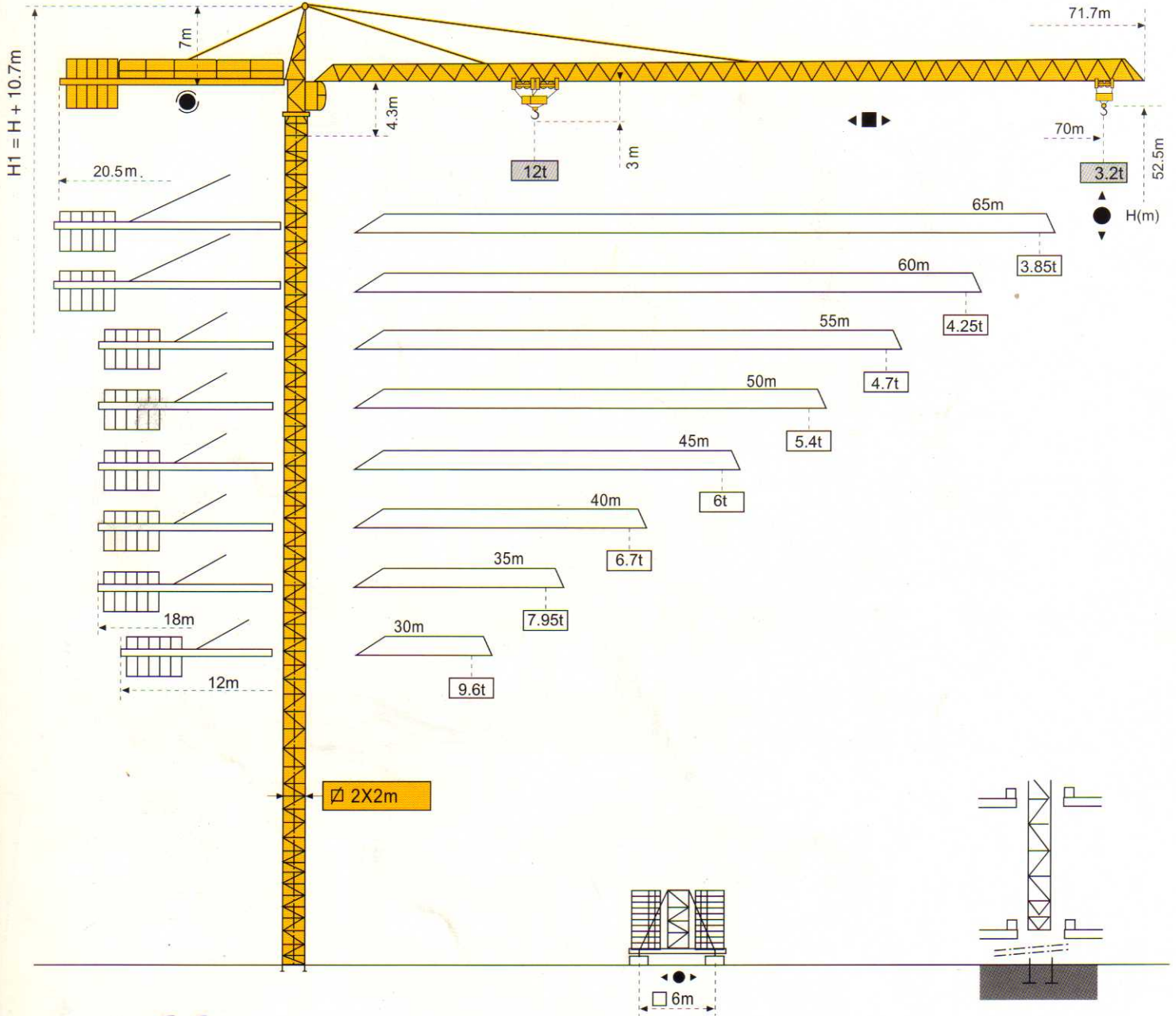


MC 310 K12



STANDARD  FEM 1.001


TÜV
 ISO 9001

POTAIN 


 Crane Group

A  Company

Masts / Reactions

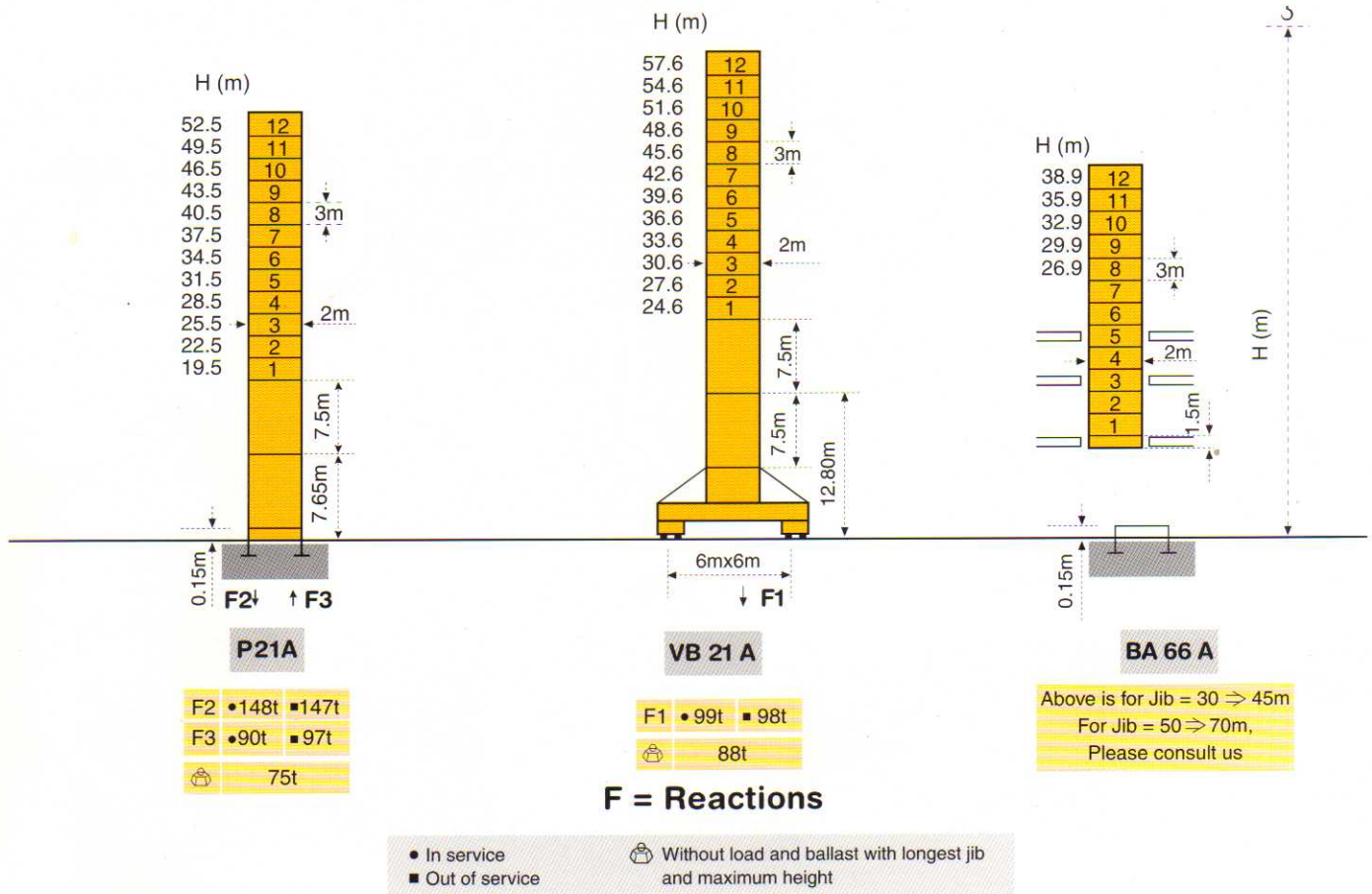
Masts



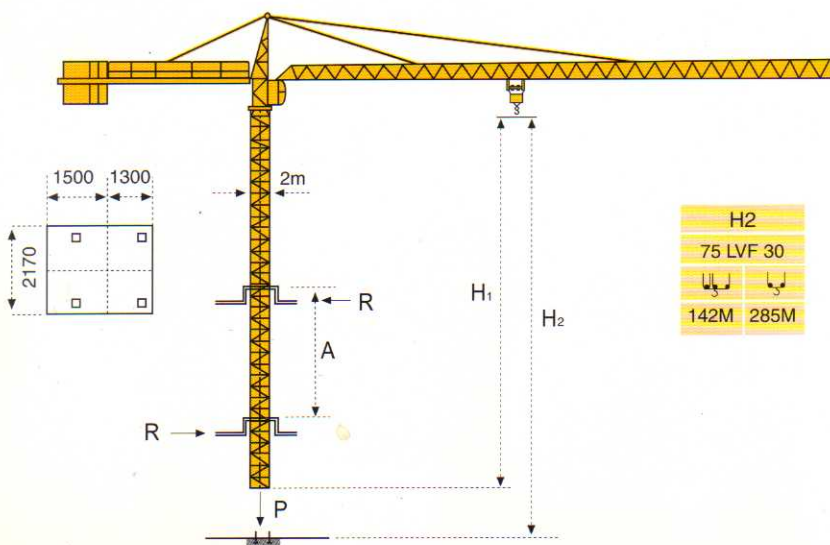
□ 2m

Jib

30m → 70m

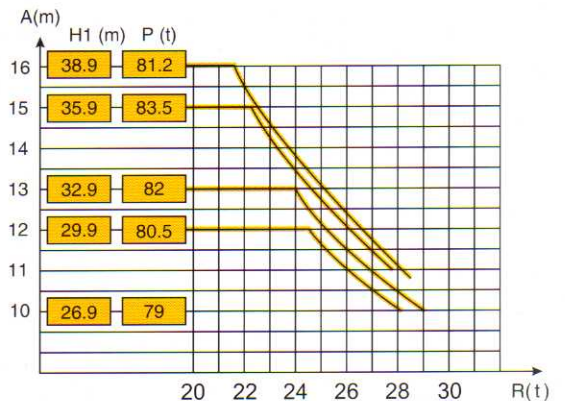


Climbing crane



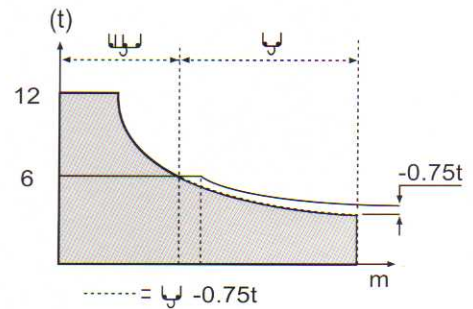
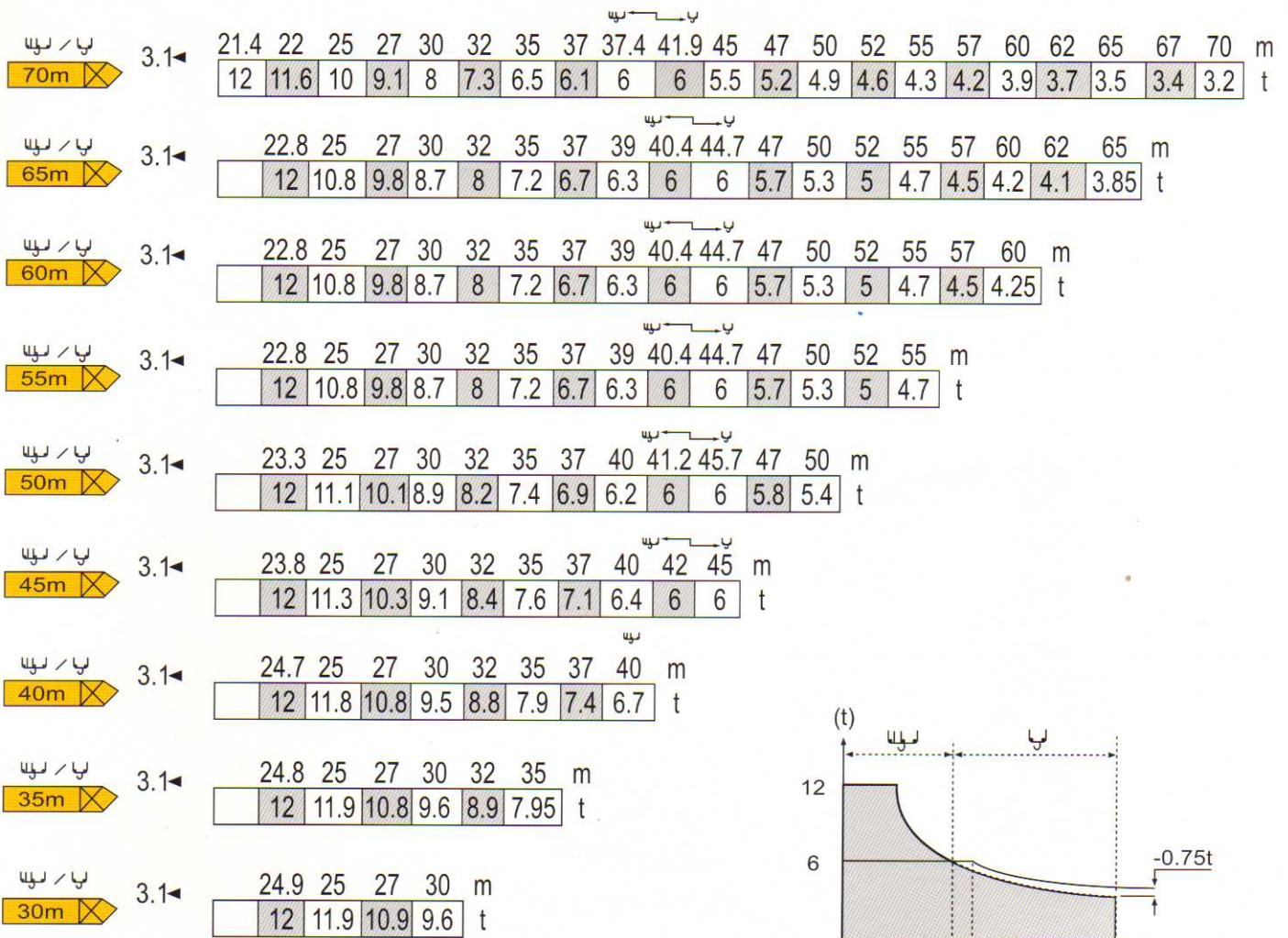
BA 66 A

H2	
75 LVF 30	
🚗	🚗
142M	285M



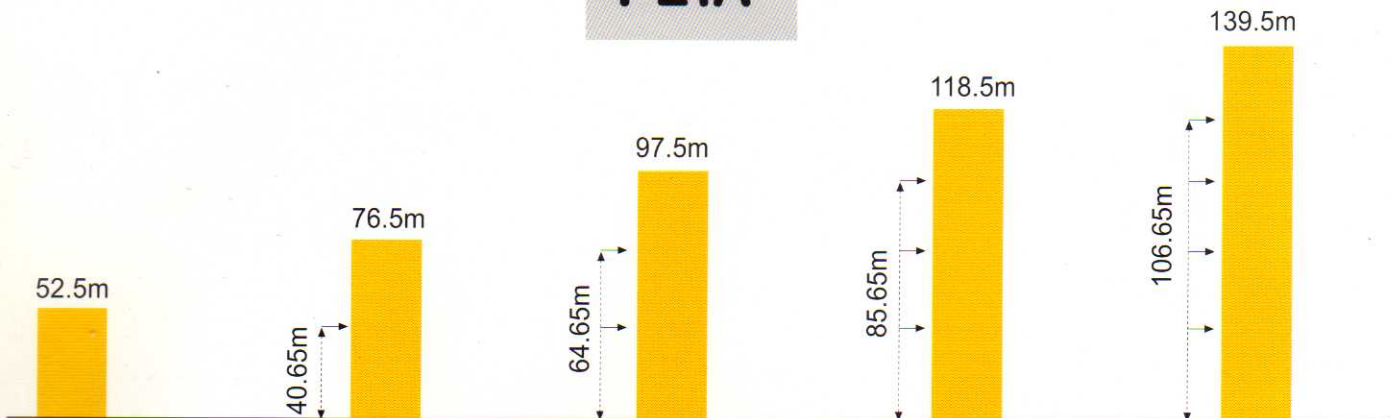
A Distance between collars
P Crane weight (in service)
H1 Crane height
R Horizontal reaction

Load diagrams









Anchorage

P21A



Mechanisms

		m/min	t	m/min	t	ch-Ps hp	kW	
Hoisting	 75 LVF 30	↑		↑		75	55	570m
		3.6 ↓ 14 ↓ 44 ↓ 56 ↓ 80 ↓ 104	6 6 6 4.5 3 1.5	1.8 ↓ 7 ↓ 22 ↓ 28 ↓ 40 ↓ 52	12 12 12 9 6 3			
Trolleying	 6 D3 V4	15 - 50 m/min (12t)				7.4	5.4	
		100 m/min (6t)						
Slewing	 RVF 162	0 ⇒ 0.7 tr/min (rpm)				2 x 7.5	2 x 5.5	
Travelling	VB 20A VB 21A  R ≥ 13M RT 544 A1 2V	13.5 ⇒ 27 m/min				4 x 7	4 x 5.2	
CEI 38  IEC 38	kVA		Generator set					
400V (+6% - 10%) 50Hz	75LVF : 100 kVA		*					

* Please consult us.

Subject to Modification



GROVE
POTAIN 

Manitowoc Crane Group Asia Pte Ltd
Manitowoc Crane Group

26 Benoi Road
Singapore 629 898
Tel: 65-6861 7133
Fax (Admin/Sales) : 65-6862 4040
Fax (Service/Parts) : 65-6862 4142
www.manitowoccrane.com

Copyright. © POTAIN 2003

MC 310 K12

Ref: 2003.06

