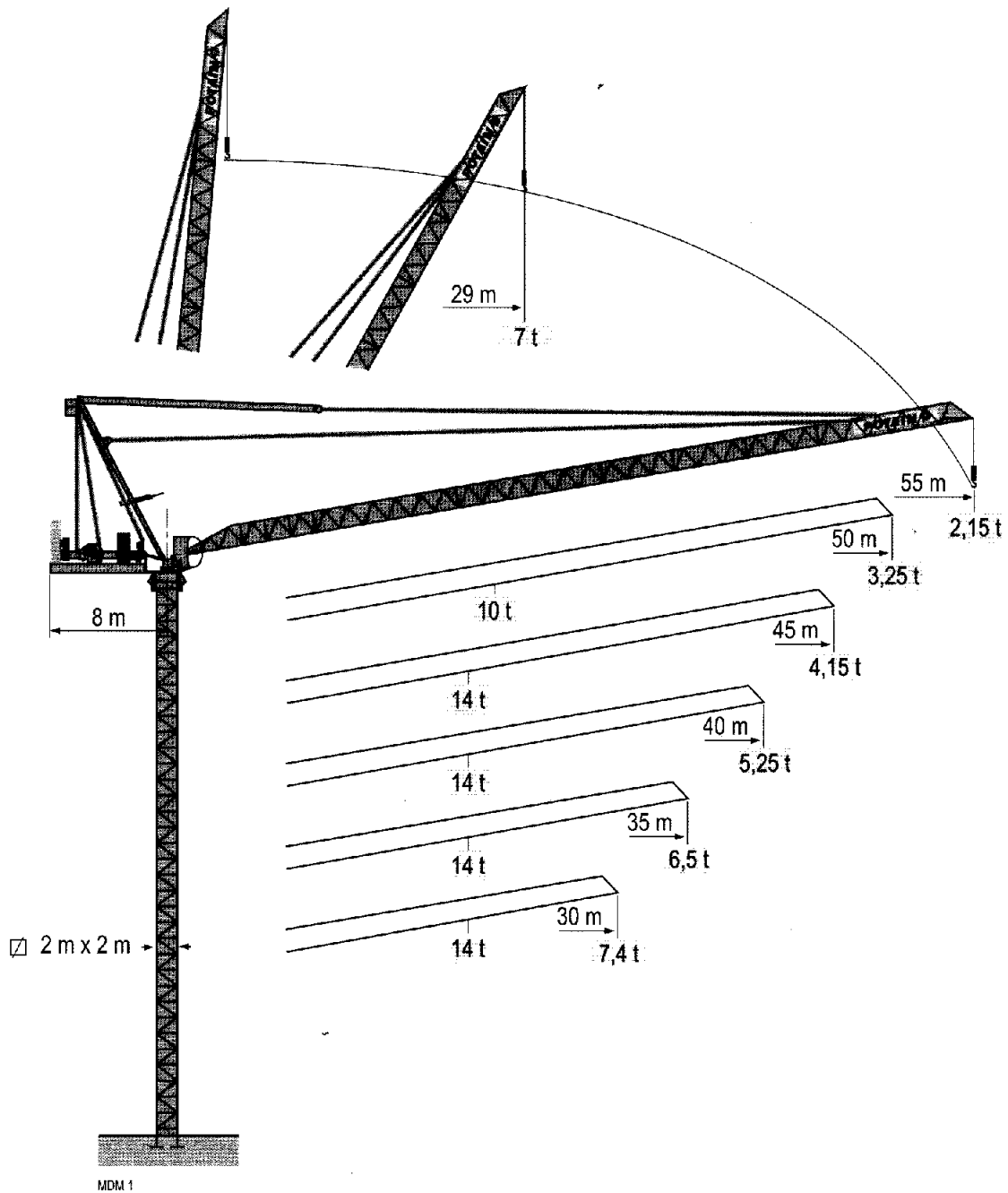


POTAIN

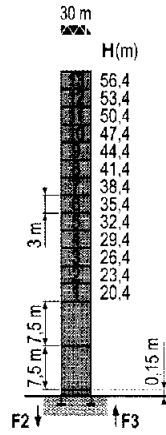
MCR 225 A



Masts / Reactions

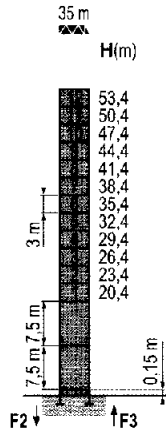
MCM 2

Telescopic 2 m



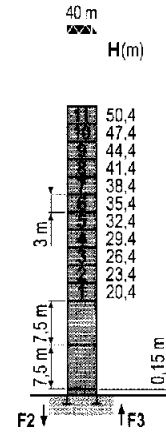
P 21 A

F2	• 164 t
	■ 229 t
F3	• 124 t
	■ 190 t
▲	61 t



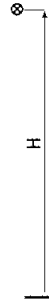
P 21 A

F2	• 162 t
	■ 229 t
F3	• 122 t
	■ 191 t
▲	60 t

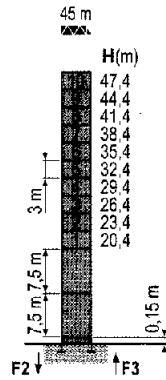


P 21 A

F2	• 159 t
	■ 227 t
F3	• 120 t
	■ 189 t
▲	59 t

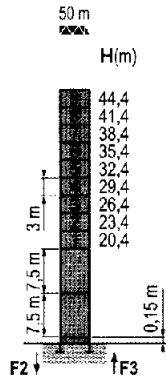


Telescopic 2 m



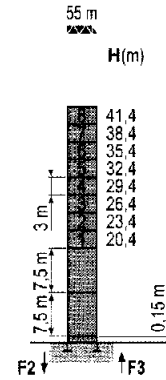
P 21 A

F2	• 156 t
	■ 224 t
F3	• 117 t
	■ 187 t
▲	58 t



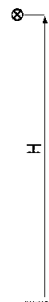
P 21 A

F2	• 153 t
	■ 222 t
F3	• 115 t
	■ 186 t
▲	57 t



P 21 A

F2	• 151 t
	■ 218 t
F3	• 114 t
	■ 182 t
▲	56 t



MCR 225 A

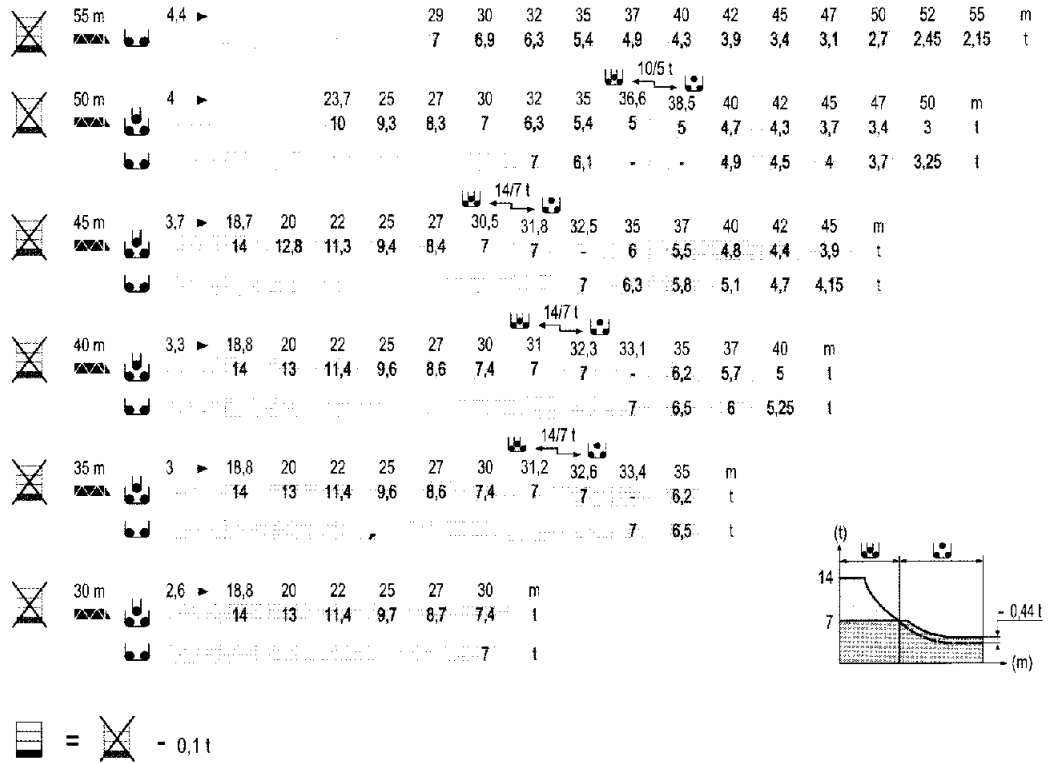
POTAIN



- Reactions in service
- Reactions out of service
- Without load, ballast (or transport axles), with maximum jib and maximum height.

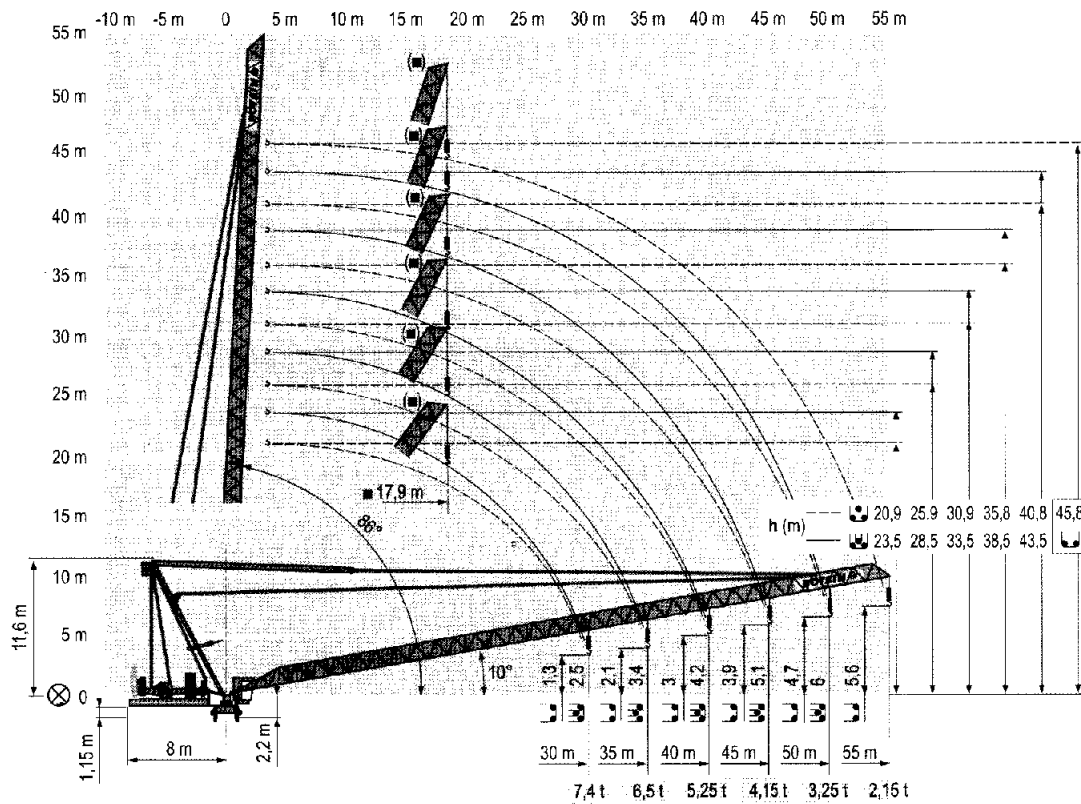
Load diagrams

MDM 1



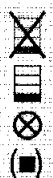
Luffing jib

MDM 1



MCR 225 A

POTAIN







63

- Load diagrams without jib-end inspection platform
- Load diagrams with jib-end inspection platform deduct 0,1 t
- Jib hinge shaft
- Weather vaning position




Mechanisms

MCU 2

MCR 225 A - 50 Hz													hp	kW													
▲	75 LVF 35	m/min	0	→	40	→	46	→	81	→	96	0	→	20	→	23	→	41	→	48	75	55	766 m				
	Optima	t	7		6		3		2,25	14		12		6		4,5											
●	100 LVF 35	m/min	0	→	52	→	62	→	108	→	140	0	→	26	→	31	→	54	→	70	100	75	1146 m				
	Optima	t	7		6		3		1,75	14		12		6		3,5											
▲	150 LCC 35	m/min	0	→	84	→	100	→	124	→	166	→	200	0	→	42	→	50	→	62	→	83	→	100	150	110	1004 m
		t	7		5,25		3,5		1,75		0,875	14		10,5		7		3,5		1,75							
▲	75 V VF 30	m/min	2 min										75	55													
●	RVF 162 Optima +	rpm	0 → 0,7										2 x 7,5		2 x 5,5												
CEI 38 			IEC 38					kVA																			
400 V (+6% -10%)								75 LVF : 165 KVA 100 LVF : 190 KVA 150 LCC : 240 KVA																			

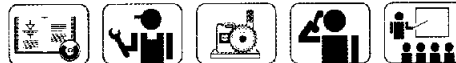
MCR 225 A - 60 Hz													hp	kW													
▲	75 LVF 35	m/min	0	→	40	→	46	→	81	→	96	0	→	20	→	23	→	41	→	48	75	55	766 m				
	Optima	t	7		6		3		2,25	14		12		6		4,5											
●	100 LVF 35	m/min	0	→	52	→	62	→	108	→	140	0	→	26	→	31	→	54	→	70	100	75	1146 m				
	Optima	t	7		6		3		1,75	14		12		6		3,5											
▲	150 LCC 35	m/min	0	→	84	→	100	→	124	→	166	→	200	0	→	42	→	50	→	62	→	83	→	100	150	110	1004 m
		t	7		5,25		3,5		1,75		0,875	14		10,5		7		3,5		1,75							
▲	75 V VF 30	m/min	2 min										75	55													
●	RVF 162 Optima +	rpm	0 → 0,7										2 x 7,5		2 x 5,5												
CEI 38 			IEC 38					kVA																			
480 V (+6% -10%)								75 LVF : 165 KVA 100 LVF : 190 KVA 150 LCC : 270 KVA																			



-  Hoisting
-  Luffing
-  Slewing



This commercial document is not legally binding.
For any technical information, please refer to the corresponding instructions.



Americas
Tel : +1 888 479 7278
Tel : +1 717 893 2000

Europe - Middle East - Africa
Tel : +33 (0) 4 72 81 30 00
Tel : +44 (0) 191 822 2000

Asia - Pacific
Tel : +65 6264 1188
Fax : +65 6862 4040

www.manitowoccrane.com

Manitowoc Crane Group Asia Pte Ltd
Manitowoc Crane Group
4 Kwong Min Road
Singapore 628707

Tel: +65 6264 1188
Fax: +65 6862 4040
www.manitowoccrane.com

MCR 225 A
Réf. 2006 06 MDM 4