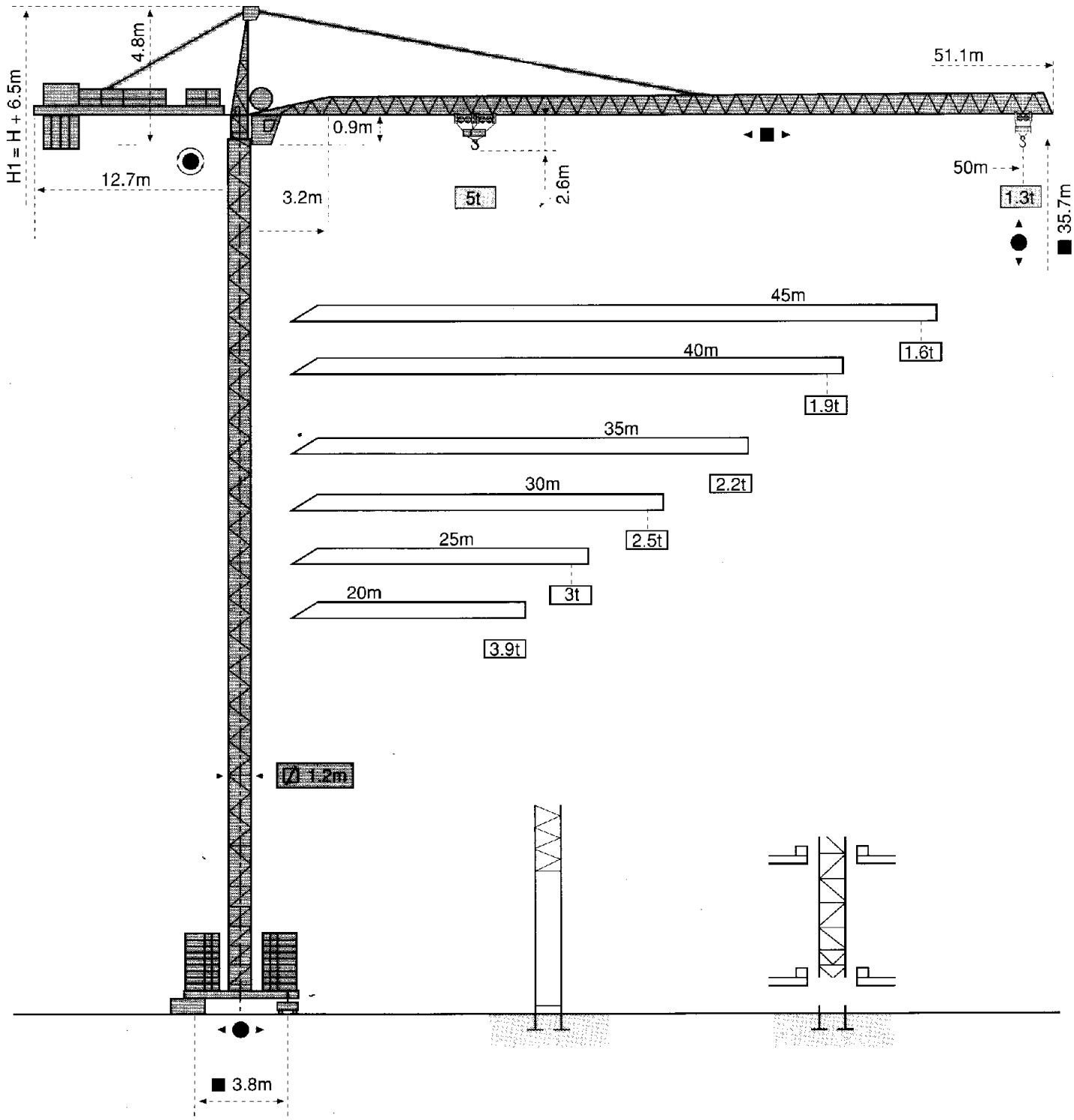


# MCI 85A

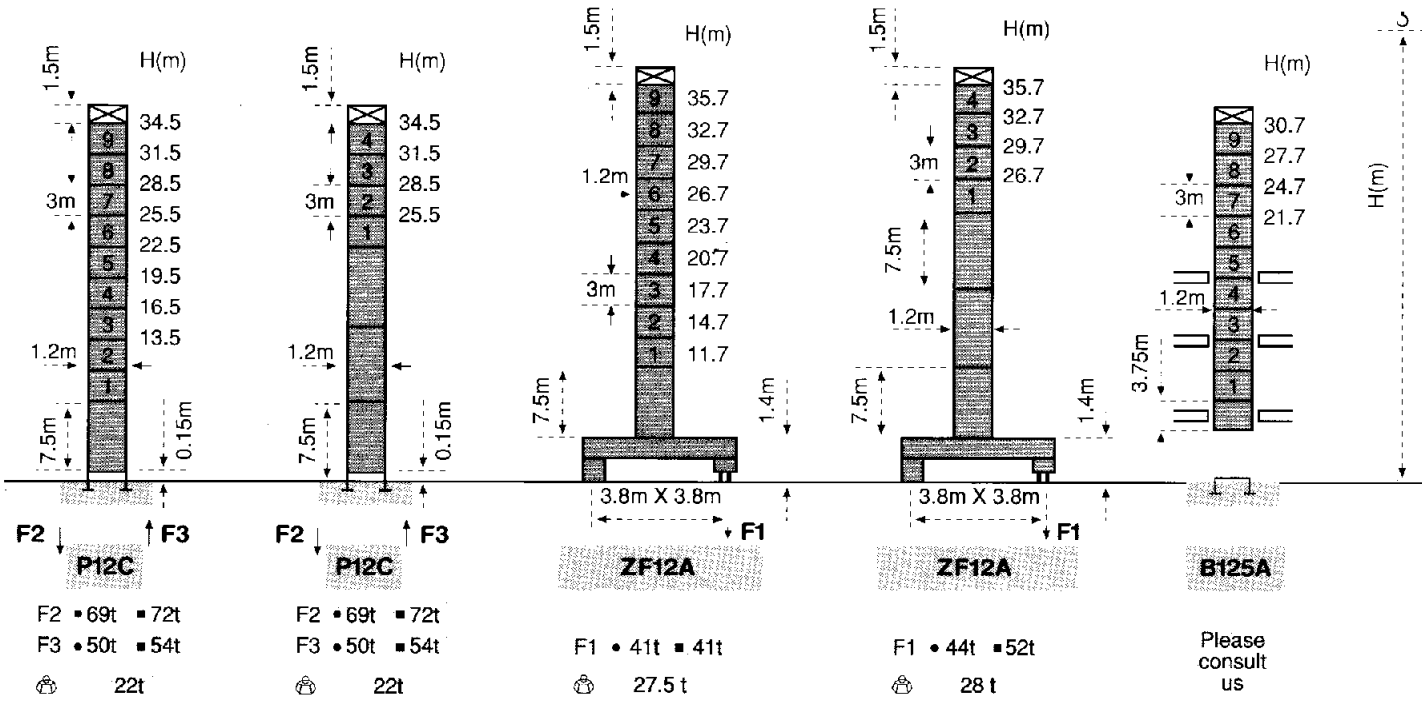
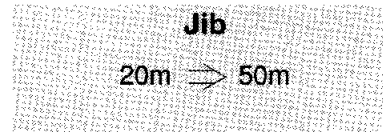
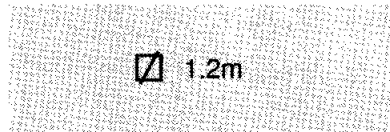
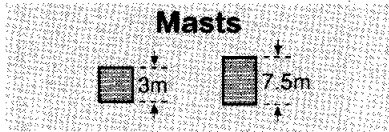


TÜV  
ISO 9001

POTAIN 

antowoc  
Crane Group

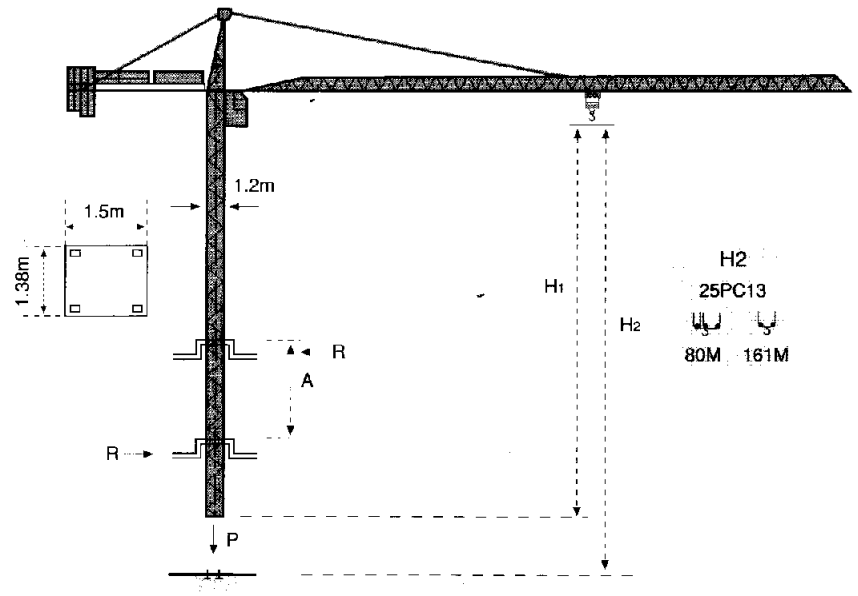
# Masts / Reactions



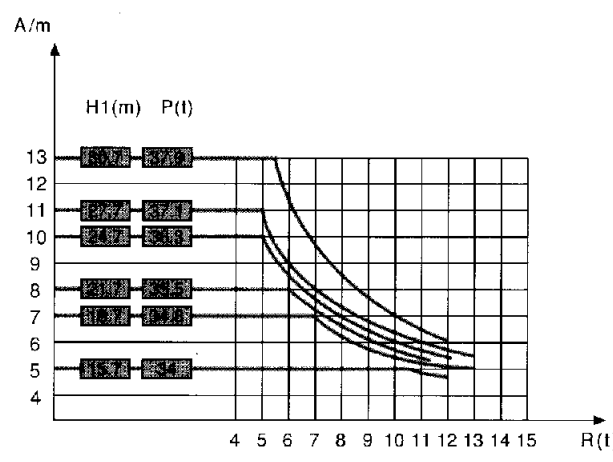
## F = Reactions

- In service
- Out of service
- ⊗ Without load and ballast with longest jib and maximum height

# Climbing crane

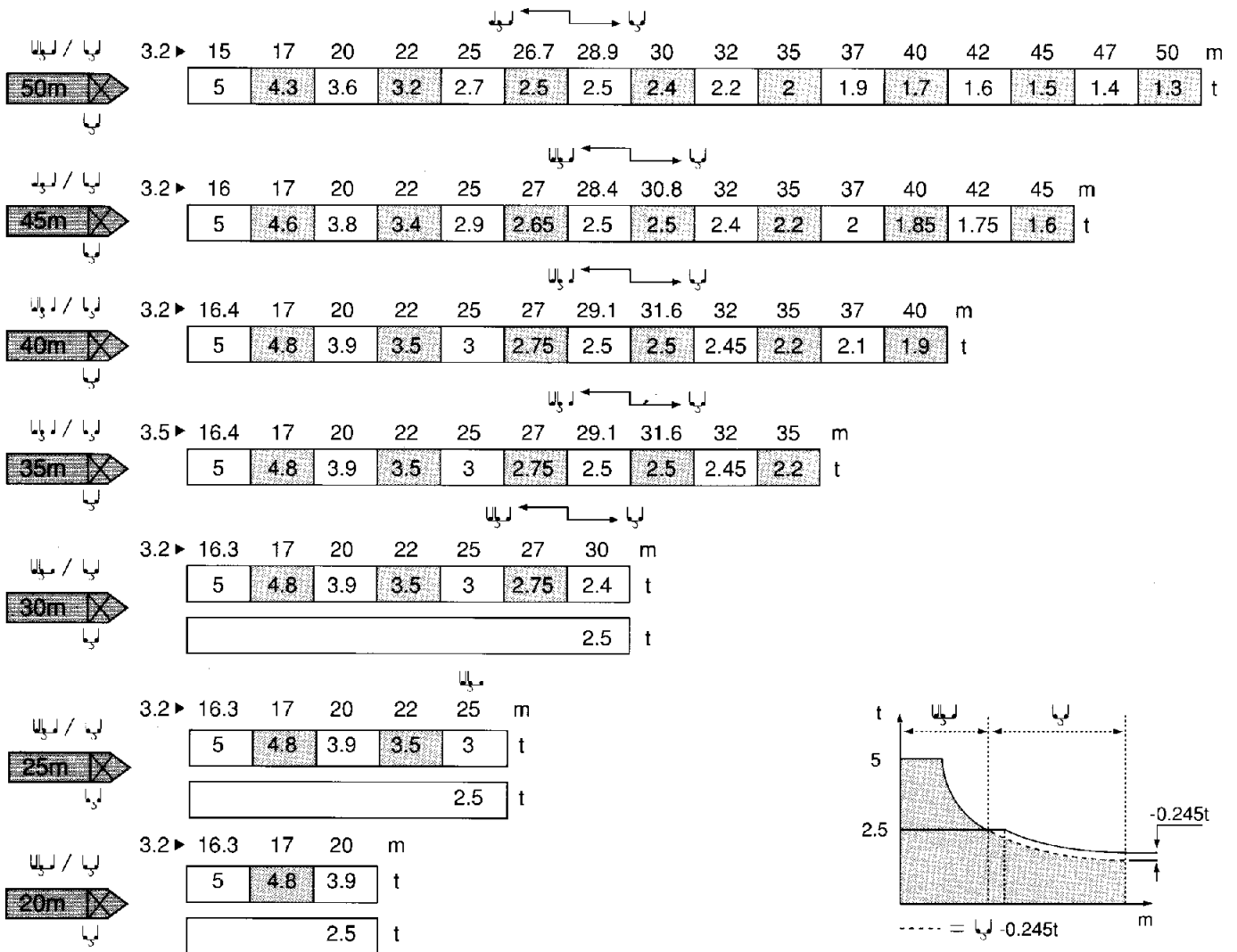


**B125A**



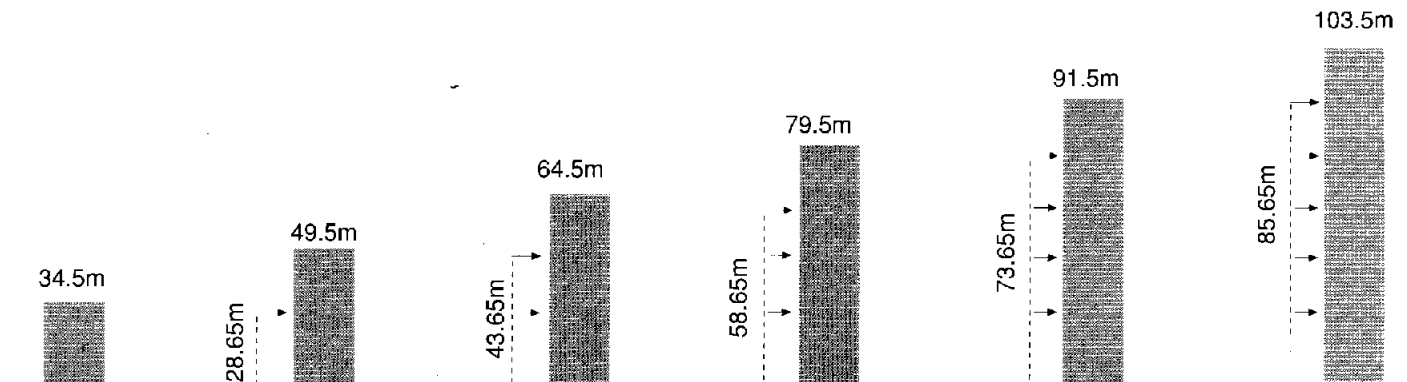
- A Distance between collars
- P Crane weight (in service)
- H<sub>1</sub> Crane height
- R Horizontal reaction

# Load diagrams











# Anchorage

P12C



# Mechanisms

		m/min	t	m/min	t	ch-Ps hp	kW	
Hoisting	 25 PC 13					25	18.4	322m
		6.6	2.5	3.3	5			
		33	2.5	16.5	5			
		66	1.3	33	2.6			
Trolleying	 4 D3 V3	15 ⇒ 30 ⇒ 58 m/min				4	3	
Slewing	 RCV 80	0 ⇒ 0.8 tr/min (rpm)				8	5	
Travelling	ZF  TVD 324	26 m/min				2 X 4	2 X 2.9	
CEI 38  IEC 38		<b>kVA</b>				Generator set		
400V ( +6% – 10% ) 50Hz		25 PC : 40 kVA				*		

\* Please consult us.

Subject to Modification. This commercial document is not legally binding. For any technical information, please refer to the corresponding instructions.



**GROVE**

**POTAIN** 

**Manitowoc Crane Group Asia Pte Ltd**  
 Manitowoc Crane Group

26 Benoi Road  
 Singapore 629 898  
 Tel: 65-6861 7133  
 Fax (Admin/Sales) : 65-6862 4040  
 Fax (Service/Parts): 65-6862 4142  
 www.manitowoccrane.com

Copyright. © POTAIN 2004

**MCi 85A**

Ref: 2004 01