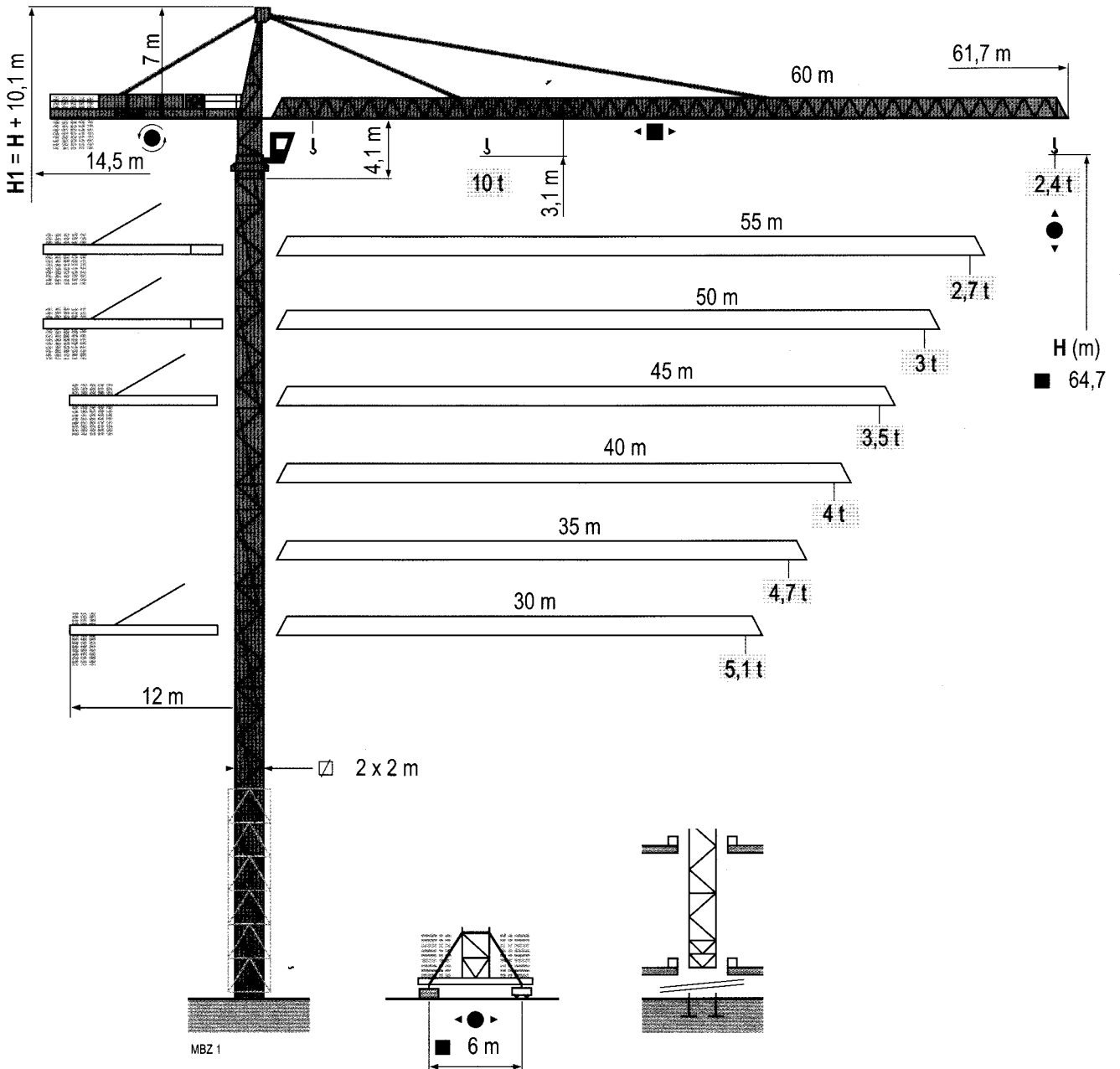


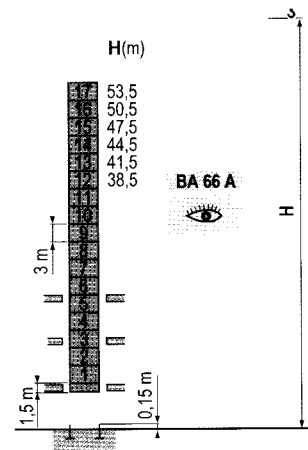
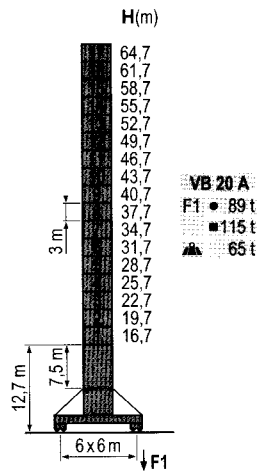
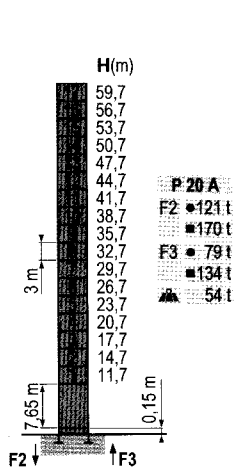
MC 205 B



Masts / Reactions

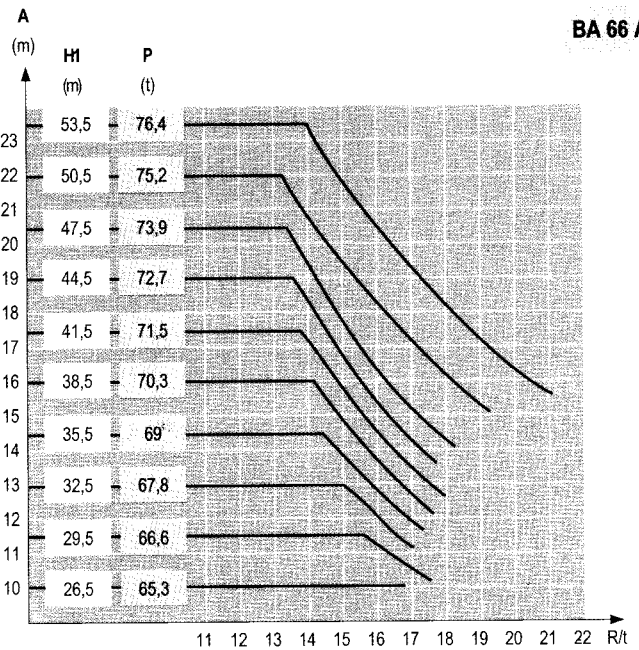
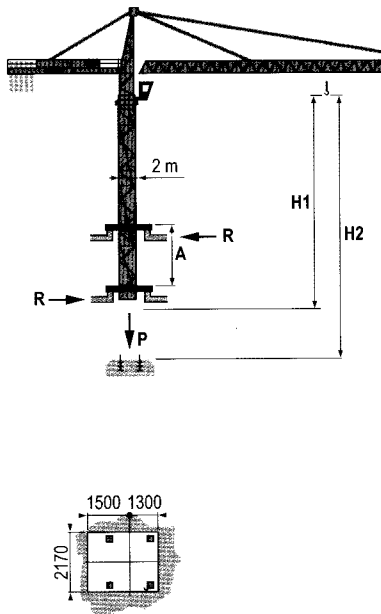
□ 2 m
 ▨ 30 m → 60 m

MBZ 1



Climbing crane

MBZ 1



TOPKIT MC 205 B

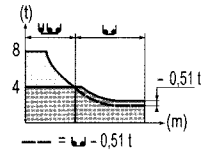
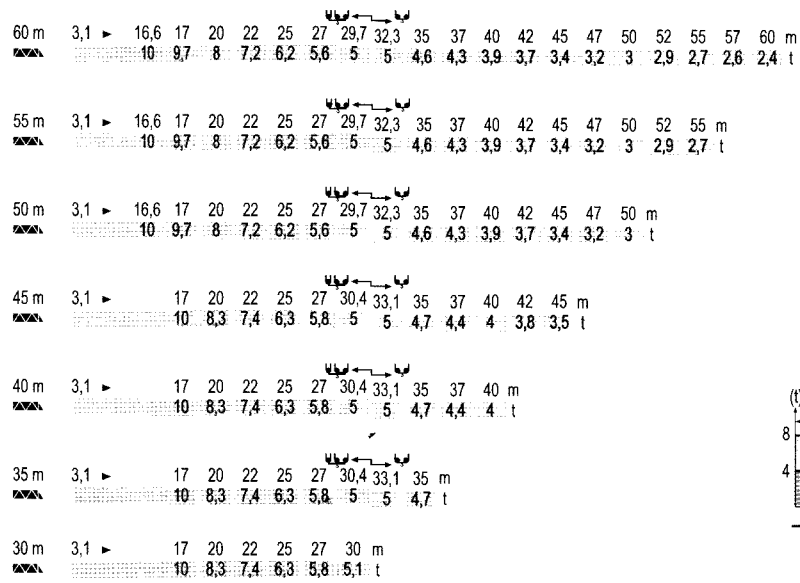
POTAIN

GB

- Reactions in service
- Reactions out of service
- ▲ Without load, ballast (or transport axles), with maximum jib and maximum height.
- 👁 See climbing crane

Load diagrams

MBZ 1



Counter-jib ballast

MBZ 1

Crane Height (m)	Counter-jib Length (m)	Ballast Weight (kg)
60 m	14,5 m	18 600
55 m	14,5 m	15 800
50 m	14,5 m	14 400
45 m	12 m	17 200
40 m	12 m	14 400
35 m	12 m	13 000
30 m	12 m	11 000

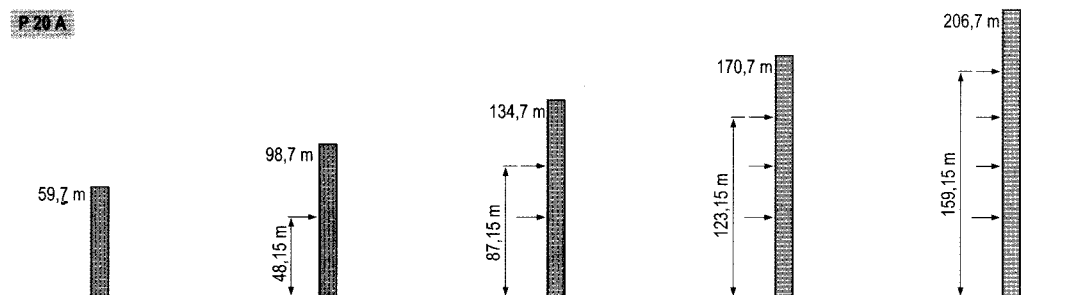
Base ballast

MBZ 1

Crane Height (m)	Base Ballast Weight (t)	64,7	61,7	58,7	55,7	52,7	49,7	46,7	43,7	40,7	37,7	34,7	31,7	28,7	25,7	22,7	19,7	16,7	13,7	
2 m VB 20 A	(t)	108	96	84	72	60	48	36	24	24	24	24	24	24	24	24	24	24	24	24

Anchorage

MBZ 1










TOPKIT MC 205 B







- A** Distance between collars
- H1** Crane height
- P** Crane weight (in service)
- R** Horizontal reaction

Mechanisms

MBZ 2

 55 RCS 25	m/min	0 → 44	0 → 88	0 → 22	0 → 44	hp	kW	 500 m
	t	5	2,5	10	5			
 5 D3 V4	m/min	15 - 30 - 58				5	3,7	
 RCV 145	rpm	0 → 0,8				2 x 6	2 x 4,4	
 VB 20 A RT 544 A1 2V R ≥ 13 m	m/min	13,5 → 27				4 x 7	4 x 5,2	
CEI 38  IEC 38								
400 V (+6% -10%) 50 Hz		55 RCS : 75kVA						

G8

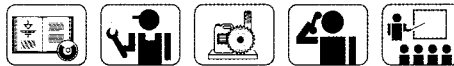
-  Hoisting
-  Trolleying
-  Slewing
-  Travelling



This commercial document is not legally binding.
For any technical information, please refer to the corresponding instructions.

Manitowoc
Crane CARE

Manitowoc
Crane Group



Americas

Tel : +1 888 479 7278
Tel : +1 717 593 2000

Europe - Middle East - Africa

Tel : +33 (0) 4 72 81 50 00
Tel : +44 (0) 191 522 2000

Asia - Pacific

Tel : +65 6264 1188
Fax : +65 6862 4142

www.manitowoccrane.com

Manitowoc Crane Group Asia Pte Ltd

Manitowoc Crane Group
4 Kwong Min Road
Singapore 628707

Tel: +65 6264 1188
Fax: +65 6862 4040
www.manitowoccrane.com

MC 205 B
Réf. 2004 45 MBZ 3

Copyright.Reproduction interdite © POTAIN 2004