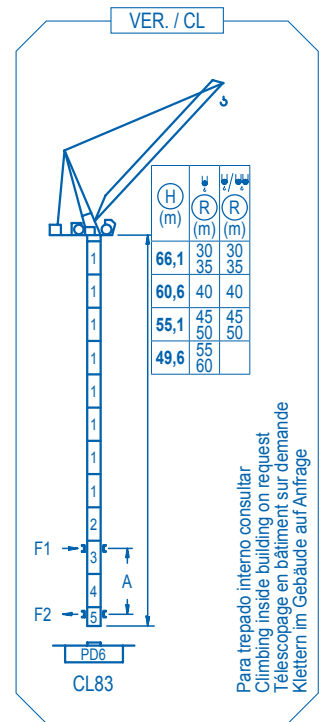
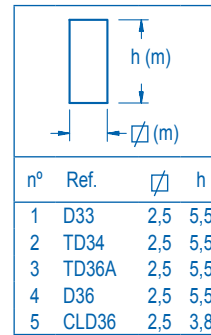
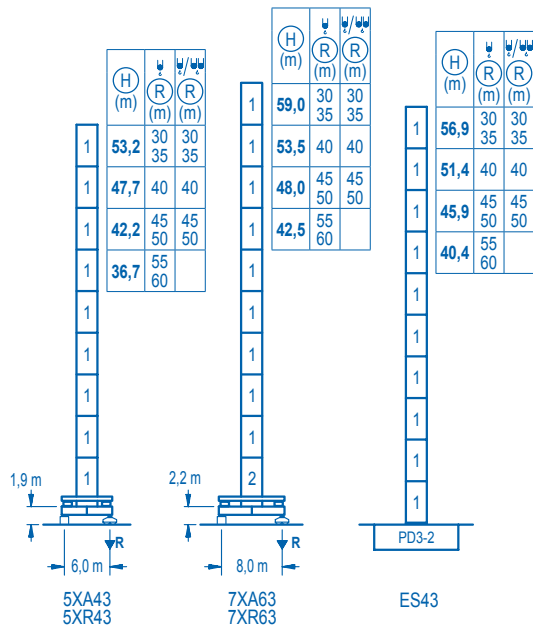


R	30	35	40	45	50	55	60	
13600	14000	10800	11200	8800	9000	6600	7000	5100
4300	3200							

m
kg
kg

R (m)	ψ	R _{Cmax} (m)	10	15	20	25	30	35	40	45	50	55	60	←(m) ↓(kg)
60		28,0				12000	10600	8130	6500	5340	4460	3780	3200	
55		29,0			12000	11360	8900	7220	6000	5070	4300			
50		30,0				12000	9520	7800	6520	5500				
45		31,0				12000	10110	8350	7000					
40		32,0				12000	10710	9000						
35		33,0				12000	11200							
30		30,0				12000								

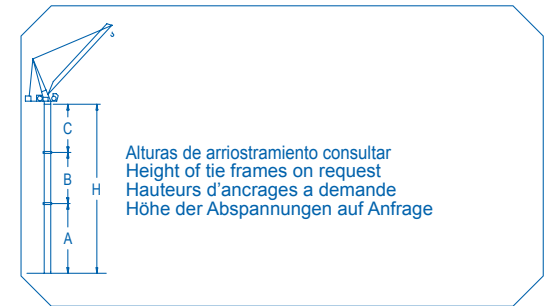
R (m)	ψ/ψ	R _{Cmax} (m)	10	15	20	25	30	35	40	45	50	55	60	←(m) ↓(kg)
60														
55														
50		14,6	24000	23170	16090	12200	9750	8050	6810	5860	5100			
45		15,3		24000	17420	13380	10780	8970	7640	6600				
40		16,1		24000	18830	14670	11950	10030	8600					
35		17,0		24000	20070	15700	12830	10800						
30		18,0		24000	21350	16670	13600							



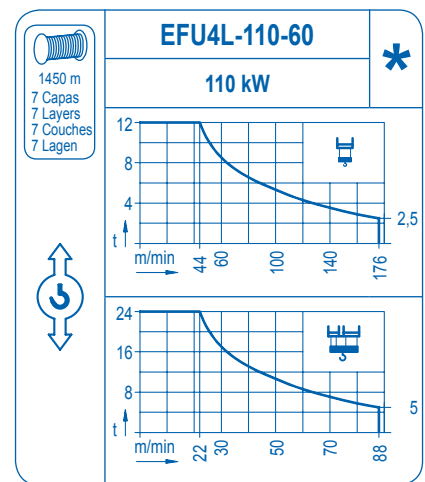
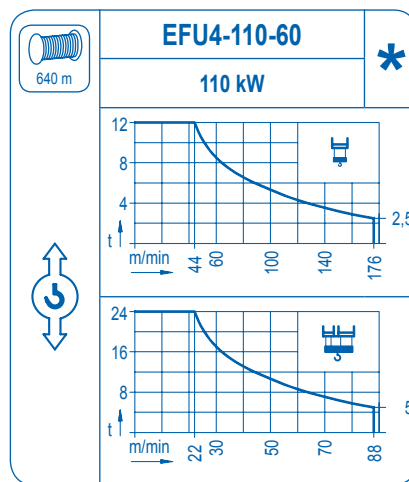
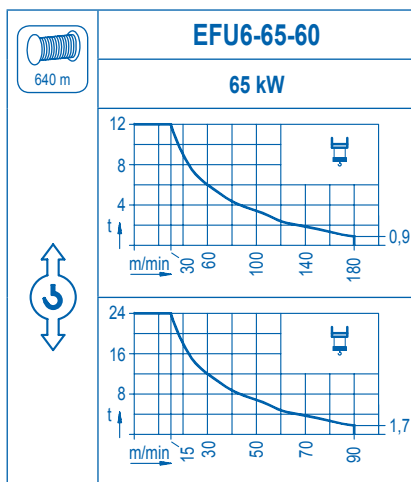
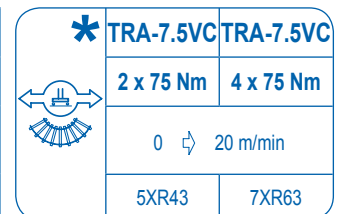
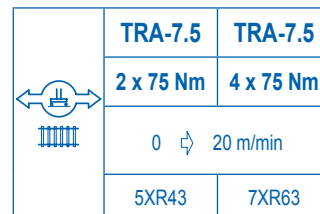
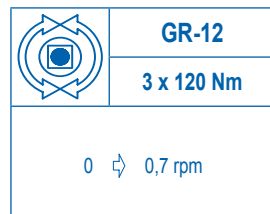
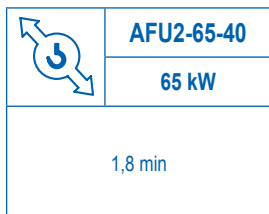
Para trepado interno consultar
Climbing inside building on request
Telescopage en bâtiment sur demande
Klettern im Gebäude auf Anfrage

R. máx.	En servicio In operation En service In Betrieb	5XR43..... 130 t 7XR63..... 115 t	R. máx.	Fuera de servicio Out of service Hors service Ausser Betrieb	5XR43..... 155 t 7XR63..... 145 t

Para otras zonas de viento o alturas superiores consultar
For other wind zones or additional hook heights on request
Pour d'autres zones de vent ou des hauteurs supplémentaires sur demande
Für andere Windzonen oder weiteren Hakenhöhen auf Anfrage



Alturas de arriostamiento consultar
Height of tie frames on request
Hauteurs d'ancrages a demande
Höhe der Abspannungen auf Anfrage



Tensión de alimentación Operating voltage Tension de service Betriebsspannung	400 V 3 ph 50 Hz
--	------------------------

Opcional Optional En option Kaufoption	*
---	---



Tel.: (34) 948 335 020
Fax: (34) 948 330 810
e-mail: info@comansa.com
www.comansa.com

Polígono Urbizkain
E-31620 HUARTE-PAMPLONA.- SPAIN

DS.1105.20	02/11	LCL 310 24 t
------------	-------	--------------