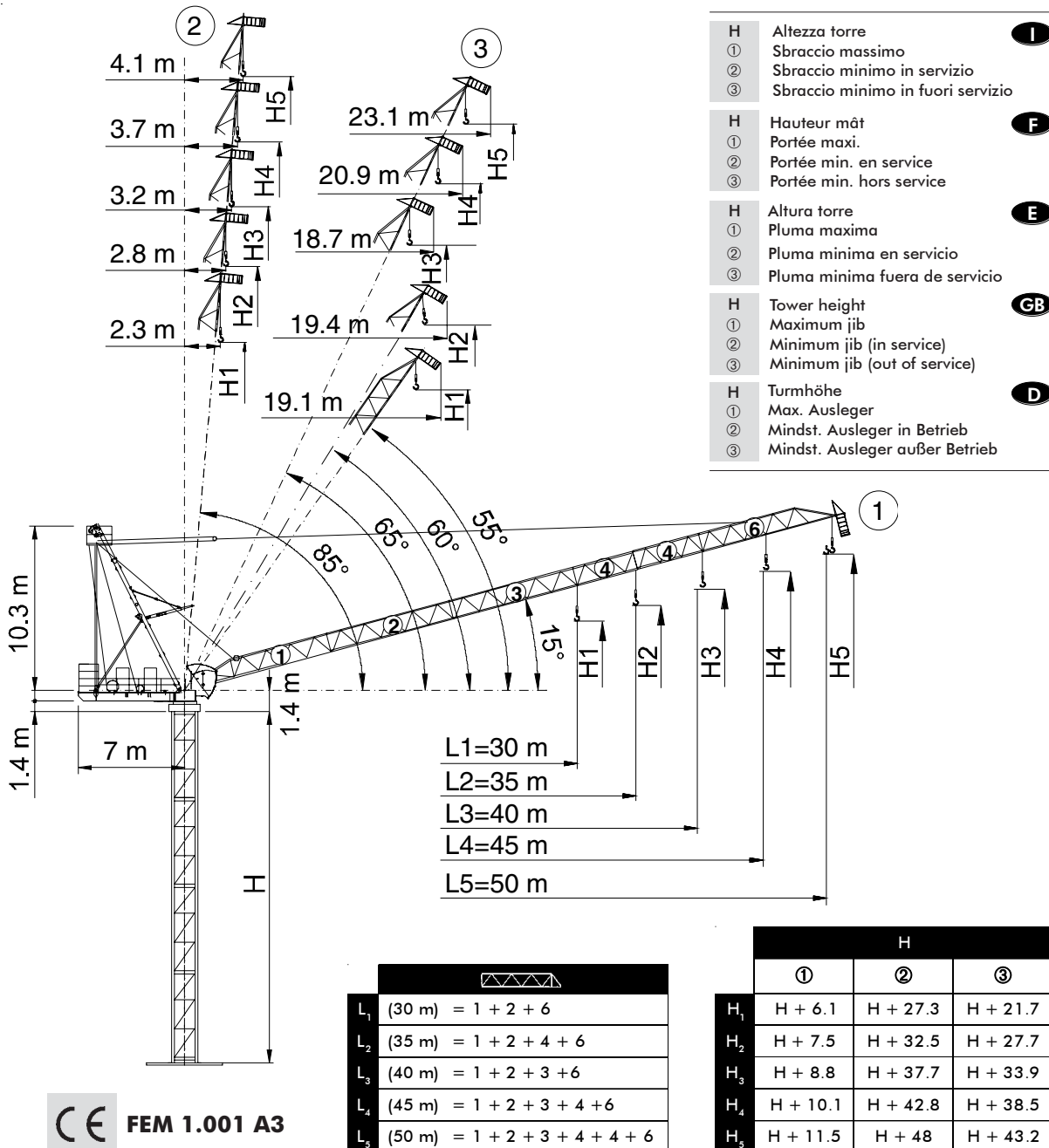


• **Gru a torre a braccio impennabile**
Luffing Jib Tower Crane • Grue à tour à flèche relevable
 • **Turmdrehkran mit Steilstellung-Ausleger**
 • **Grúa torre de pluma abatible**



CE FEM 1.001 A3

In vigore dal: 01 gennaio 2007. Le specifiche del prodotto ed i prezzi sono soggetti a modifica senza alcun obbligo di preavviso. Le fotografie e/o disegni nel presente documento hanno uno scopo meramente illustrativo. Per il corretto utilizzo di ciascuna attrezzatura, si rimanda allo specifico manuale d'istruzioni. L'inosservanza di quanto previsto nel manuale d'istruzione nell'utilizzo dell'attrezzatura, così come un comportamento irresponsabile potrebbero cagionare gravi lesioni o il decesso. Le nostre attrezzature sono coperte solo ed esclusivamente dalla garanzia *standard* scritta prevista per ogni specifico prodotto, con esclusione di qualsivoglia ulteriore garanzia, sia tacita che espressa, da parte di Terex. I prodotti e servizi elencati possono essere marchi di fabbrica, di servizi o ragioni sociali appartenenti a Terex Corporation e/o alle sue affiliate operative sia negli USA che in altri paesi e tutti i diritti s'intendono riservati. "TEREX" è un marchio appartenente a Terex Corporation e registrato sia negli USA che in altri paesi. Copyright © 2007 Terex Corporation.

Effective Date: January 01, 2007. Product specifications and prices are subject to change without notice or obligation. The photographs and/or drawings in this document are for illustrative purposes only. Refer to the appropriate Operator's Manual for instructions on the proper use of this equipment. Failure to follow the appropriate Operator's Manual when using our equipment or to otherwise act irresponsibly may result in serious injury or death. The only warranty applicable to our equipment is the standard written warranty applicable to the particular product and sale and Terex makes no other warranty, express or implied. Products and services listed may be trademarks, service marks or trade-names of Terex Corporation and/or its subsidiaries in the USA and other countries and all rights are reserved. "TEREX" is a registered trademark of Terex Corporation in the USA and many other countries. Copyright © 2007 Terex Corporation.

Diagramma di portata
Load Diagram

I
GB

Courbes de charges
Lastkurven

F
D

Curvas de cargas

E

CTL 140-8

| | | 15 | 20 | 25 | 30 | 35 | 40 | 45 | 50 |
|--|-----|------|------|------|------|------|------|------|------|
| | 4 t | 4.00 | 4.00 | 4.00 | 4.00 | 3.60 | 2.85 | 2.27 | 1.80 |
| | 4 t | 4.00 | 4.00 | 4.00 | 4.00 | 3.78 | 3.00 | 2.40 | * |
| | 6 t | 6.00 | 6.00 | 6.00 | 4.92 | 3.88 | 3.10 | 2.50 | |
| | 8 t | 8.00 | 8.00 | 6.25 | 4.81 | 3.78 | 3.00 | 2.40 | |
| | 4 t | 4.00 | 4.00 | 4.00 | 4.00 | 3.97 | 3.20 | * | |
| | 6 t | 6.00 | 6.00 | 6.00 | 5.11 | 4.07 | 3.30 | | |
| | 8 t | 8.00 | 8.00 | 6.45 | 5.01 | 3.97 | 3.20 | | |
| | 4 t | 4.00 | 4.00 | 4.00 | 4.00 | 4.00 | | | |
| | 6 t | 6.00 | 6.00 | 6.00 | 5.33 | 4.30 | | | |
| | 8 t | 8.00 | 8.00 | 6.68 | 5.23 | 4.20 | | | |
| | 4 t | 4.00 | 4.00 | 4.00 | 4.00 | | | | |
| | 6 t | 6.00 | 6.00 | 6.00 | 5.50 | | | | |
| | 8 t | 8.00 | 8.00 | 6.84 | 5.40 | | | | |

* = + 200 kg [L₃ - L₄ 45 m - 40 m] **i**

Altre installazioni
Other configurations

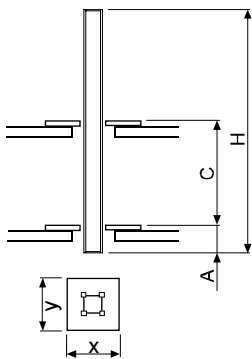
I
GB

Autres implantations
Aufstellmöglichkeiten

F
D

Otras implantaciones

E

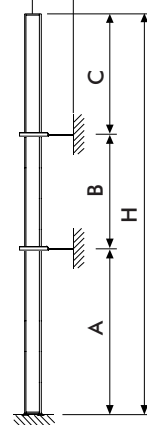


i

Gru climbing
Bottom climbing crane
Télescopage sur dalles
Kletterkran im Gebäude
Grúa trepadora

I
GB
F
D
E

min. 2.3 m (TS16)
min. 2.6 m (TS21)



i

Gru ancorata
Crane tied to the structure
Grue ancrée
Geankerter Kran
Grúa anclada

I
GB
F
D
E

| | | TS 16 CL | | | | | | | | | | | | | | | | | | | |
|-------------------------|--|----------------|----------------|----------------|----------------|----------------|----------------|----------------|----------------|----------------|----------------|----------------|----------------|----------------|----------------|----------------|----------------|----------------|----------------|----------------|----------------|
| | | [m] | | | | | | | | | | | | | | | | | | | |
| | | L ₁ | L ₂ | L ₃ | L ₄ | L ₅ | L ₁ | L ₂ | L ₃ | L ₄ | L ₅ | L ₁ | L ₂ | L ₃ | L ₄ | L ₅ | L ₁ | L ₂ | L ₃ | L ₄ | L ₅ |
| C _{min} | | 11 | 12 | 11 | 12 | 13 | 11 | 12 | 13 | - | 12 | 13 | - | - | 12 | 13 | - | - | - | - | - |
| H _{max} | | 29.5 | | 32.45 | | | 35.4 | | | - | 38.35 | | - | - | 41.3 | | - | - | - | - | - |
| A _{min} | | 2.2 | | | | | | | | | | | | | | | | | | | |
| x | | i | | | | | | | | | | | | | | | | | | | |
| y | | i | | | | | | | | | | | | | | | | | | | |

| | | TS 16 24.6 | | | | | | | | | |
|-------------------------|--|----------------|----------------|----------------|----------------|----------------|----------------|----------------|----------------|----------------|----------------|
| | | [m] | | | | | | | | | |
| | | L ₁ | L ₂ | L ₃ | L ₄ | L ₅ | L ₁ | L ₂ | L ₃ | L ₄ | L ₅ |
| C _{min} | | 12 | | | | | 14 | | | | |
| H _{max} | | 45.1 | 42.2 | 39.2 | 36.2 | | 48.1 | 45.1 | 42.2 | 39.2 | 36.2 |
| A _{min} | | 1 | | | | | 1 | | | | |
| x | | 2.3 | | | | | 2.3 | | | | |
| y | | 1.7 | | | | | 1.7 | | | | |

| | | TS 16 R1 | | | TS 21 R2 | | |
|-----------------------------|--|------------------|------------------|----------------|------------------|------------------|----------------|
| | | [m] | | | | | |
| | | L ₁₋₂ | L ₃₋₄ | L ₅ | L ₁₋₂ | L ₃₋₄ | L ₅ |
| A _{min/max} | | 24/30 | 24/27 | 24/25 | 24/36 | 24/33 | 24/30 |
| B _{min/max} | | 17.7/23.6 | 17.7/23.6 | 17.7/23.6 | 17.7/23.6 | 17.7/23.6 | 17.7/23.6 |
| C _{max} | | 30 | 27 | 25 | 36 | 33 | 30 |
| H _{max} | | i | | | | | |

Torre **I**

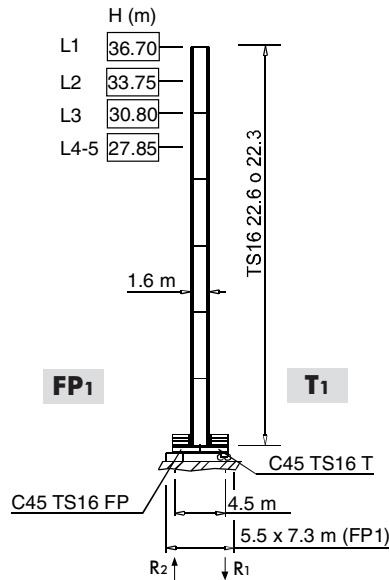
Tower **GB**

Tour **F**

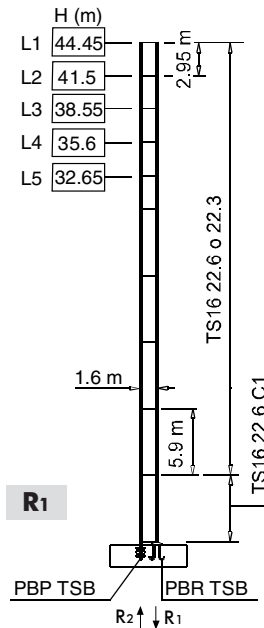
Turm **D**

Torre **E**

TS16

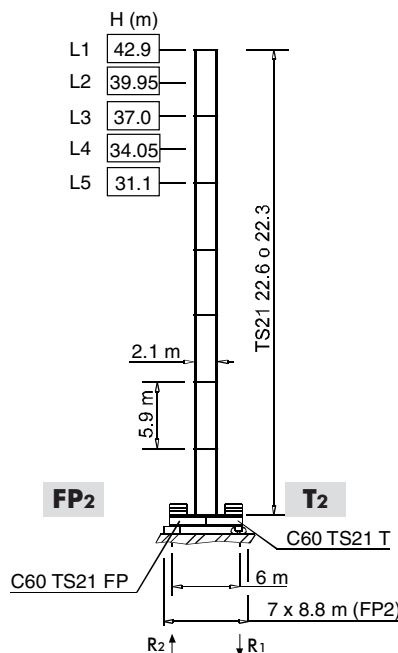


| | | |
|----|------------|-----------|
| R1 | 890 kN ● | 1100 kN ◆ |
| R2 | 0 | 0 |
| | 40 t (FP1) | |

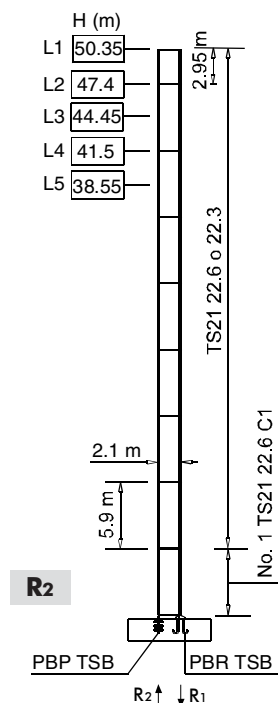


| | | |
|----|-----------|-----------|
| R1 | 1600 kN ● | 2200 kN ◆ |
| R2 | 1200 kN ● | 1950 kN ◆ |
| | 40 t | |

TS21



| | | |
|----|------------|-----------|
| R1 | 750 kN ● | 1000 kN ◆ |
| R2 | 0 | 0 |
| | 46 t (FP2) | |



| | | |
|----|-----------|-----------|
| R1 | 1350 kN ● | 2150 kN ◆ |
| R2 | 950 kN ● | 1850 kN ◆ |
| | 45 t | |

- I** Su richiesta disponibile su torre H20
- GB** H20 tower available on request
- F** Tour H20 disponible sur demande
- D** Auf Anfrage verfügbar mit Turm H20
- E** Si requerido es disponible sobre torre H20

| | | | | | | | | | | |
|----------|--|----------|---|-----------|---|----------|--|----------|--|----------|
| H | Altezza massima s. g. | I | Max. under hook height | GB | Hauteur maxi. sous crochet | F | Höchste Hackenhöhe | D | Maxima altura bajo gancho | E |
| ● | In servizio | ● | In service | ● | En service | ● | In Betrieb | ● | En servicio | |
| ◆ | Fuori servizio | ◆ | Out of service | ◆ | Hors service | ◆ | Außer Betrieb | ◆ | Fuera de servicio | |
| | A vuoto, senza zavorra, braccio max., altezza max. | | Without load, without ballast, max. jib and max. height | | A vide, sans lest, avec flèche et hauteur maximum | | Ohne Last und Ballast, mit Maximalausleger und Maximalhöhe | | Sin carga, sin lastre, con pluma y altura máxima | |

Meccanismi
Mechanisms



Mécanismes
Antriebe



Mecanismos



| | | |
|----------|-------------------------------|-----------------------|
| | | |
| 79 * kVA | 400 V - 50 Hz / 460 V - 60 Hz | 2000/14/CE modificata |

* Gru senza traslazione / Crane without travelling equipment / Grue sans translation / Krane ohne Schienenfahren / Grúa sin traslación

| | | m/min | t | kW | |
|--|--|----------|------|----|-------------|
| | | 0 ⇒ 3 | 4 | 37 | 580 m (R00) |
| | | 0 ⇒ 11 | 4 | | |
| | | 0 ⇒ 44 | 4 | | |
| | | 0 ⇒ 80 | 2.1 | | |
| | | 0 ⇒ 116 | 1.3 | | |
| | | 0 ⇒ 2 | 6 | | |
| | | 0 ⇒ 7.3 | 6 | | |
| | | 0 ⇒ 29.3 | 6 | | |
| | | 0 ⇒ 53.3 | 3.15 | | |
| | | 0 ⇒ 77.3 | 1.95 | | |
| | | 0 ⇒ 1.5 | 8 | | |
| | | 0 ⇒ 5.5 | 8 | | |
| | | 0 ⇒ 22 | 8 | | |
| | | 0 ⇒ 40 | 4.2 | | |
| | | 0 ⇒ 58 | 2.6 | | |

| | | | |
|--|----------------------------|-----------------|-------------|
| | LFC 37 R00 (VECTOR) | 1.5 min | 37 kW |
| | SCC 2 2 100S | 0 ⇒ 0.75 r.p.m. | 2 × 5.81 kW |
| | TAD 2RG 4M3 | 0 ⇒ 24 m/min | 4 × 3 kW |
| | | | |

| | | | | | | | | | | |
|--|--------------------------------|----------|--------------------------|-----------|------------------------------------|----------|--|----------|-----------------------------------|----------|
| | Sollevamento | I | Hoisting | GB | Levage | F | Heben | D | Elevación | E |
| | Brandeggio | | Luffing | | Relevage | | Ausleger-Einziehen | | Elevación de pluma | |
| | Rotazione | | Slewing | | Orientation | | Schwenken | | Orientación | |
| | Traslazione | | Travelling | | Translation | | Schienenfahren | | Traslación | |
| | Direttiva sul livello acustico | | Directive on noise level | | Directive sur le niveau acoustique | | Richtlinie für den Schall-Leistungspegel | | Directiva sobre el nivel acustico | |
| | Consultateci | | Consult us | | Nous consulter | | Auf Anfrage | | Consultarnos | |
| | Potenza totale richiesta | | Power requirements | | Puissance totale nécessaire | | Geforderte Stromstärke | | Potencia necesaria | |
| | Alimentazione | | Power supply | | Alimentation | | Stromversorgung | | Alimentación | |

Gru Comedil s.r.l.

A Terex Company
Via delle Innovazioni 17, 33074 Fontanafredda (PN) - Italy
Tel. (+39) 0434 989 111 - Telefax (+39) 0434 998 631
Internet e-mail: info@comedil.com
Internet home page: www.comedil.com

Divisione Automontanti

Via Alessandrina, 25 - 20095 Cusano Milanino (MI) - Italy
Tel. (+39) 02 613 16011 - Telefax (+39) 02 613 16034
Internet e-mail: info.CBR@comedil.com

**SISTEMA
QUALITA'
AZIENDALE**

certificato in accordo
alla norma iso 9001:2000

