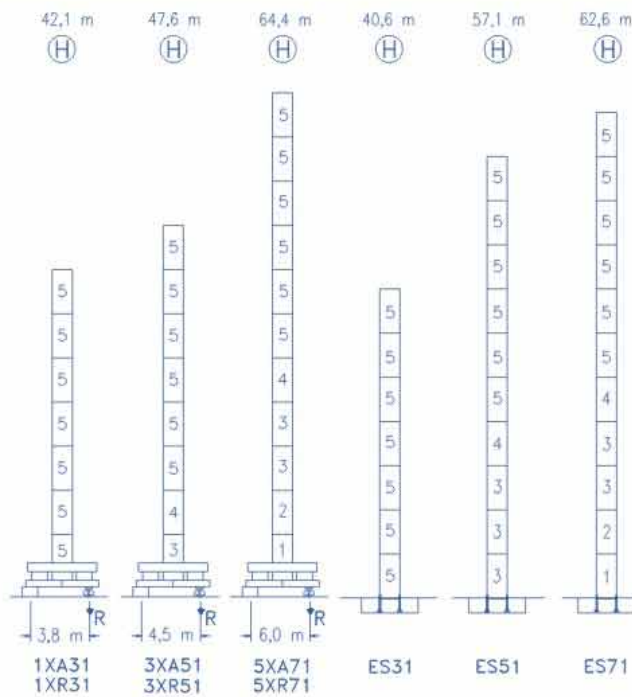
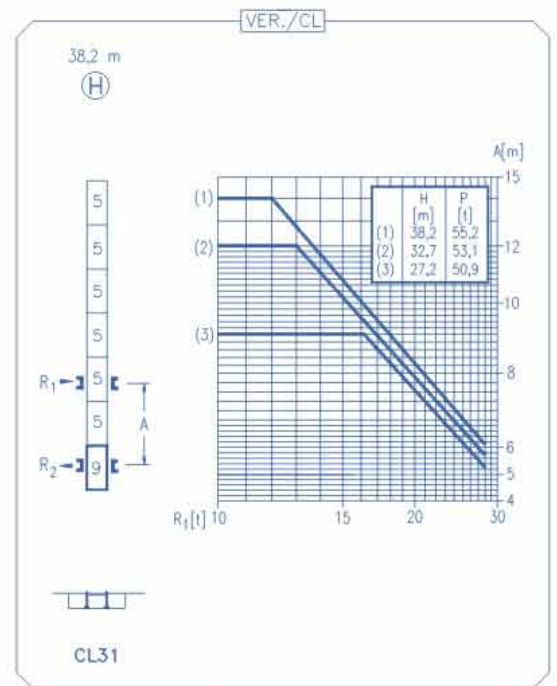


CE
DIN 15018 H1 B3

R	R _(Cmax)	C _{max}	25	30	34	40	44	50	55	60	
60	33,1 m	4000	4000	4000	3885	3230	2895	2490	2225	2000	
	17,5 m	8000	5365	4350	3775	3095	2750	2345	2075	1850	
55	33,5 m	4000	4000	4000	3930	3270	2930	2520	2250	2000	
	17,7 m	8000	5420	4395	3795	3125	2785	2375	2100	1850	
50	33,2 m	4000	4000	4000	3900	3240	2905	2500	2250	2000	
	17,5 m	8000	5375	4355	3765	3100	2760	2350	2100	1850	
44	35,6 m	4000	4000	4000	4000	3515	3150	2760	2350	2100	
	18,8 m	8000	5805	4715	4080	3365	3000	2660	2310	2050	
40	36,0 m	4000	4000	4000	4000	3550	3150	2760	2350	2100	
	18,9 m	8000	5860	4760	4120	3400	3000	2660	2310	2050	
34	34,0 m	4000	4000	4000	4000	3550	3150	2760	2350	2100	
	19,2 m	8000	5970	4850	4200	3400	3000	2660	2310	2050	
30	30,0 m	4000	4000	4000	4000	3550	3150	2760	2350	2100	
	19,2 m	8000	5970	4850	4200	3400	3000	2660	2310	2050	



N	Ref.	h
1	SJ15	5,5 m
2	TSJ15	5,5 m
3	SJ14	5,5 m
4	TSJ14	5,5 m
5	SJ13	5,5 m
9	CLSJ13.1	3,1 m



R.max.	En servicio In operation En service In Betrieb	1XR31 74,0 t 3XR51 71,9 t 5XR71 82,4 t
--------	---	--

R. max.	Fuera de servicio Out of service Hors service Ausser Betrieb	1XR31 81,7 t 3XR51 89,4 t 5XR71 125,4 t
---------	---	---

TFU-4.0
4 kW

0 ⌀ 66 m/min

SWR-7.5
2 x 75 Nm

0 ⌀ 0,7 rpm

TS2-5.5 TRA-7.5
2 x 55 Nm 2 x 75 Nm

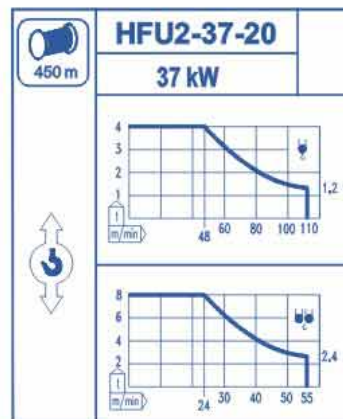
0 ⌀ 20 m/min

1XR31 3XR51 5XR 71

TRA-7.5VC
2 x 75 Nm

0 ⌀ 20 m/min

5XR71



Tension de alimentación Operating voltage Tension de service Betriebsspannung	400 V 3 ph 50 Hz
--	---------------------------------

Optional Optional En option Kaufoption	选项	*
---	-----------	----------



杭州科曼萨杰牌建设机械有限公司
 电话: +86-571-8299 9999
 传真: +86-571-8299 6555
 电邮: sales@comansajie.com.cn
 网址: www.comansajie.com.cn
 地址: 杭州市萧山靖江工业园区 311223